

NAVIGATING TO THE DISTRIBUTION CENTER

Table of Contents

Summary	1
Purpose of Document.....	1
General Location Information	1
Contact Information	1
Walking to the Distribution Center	2
Step 1: Relative Position	2
Step 2: University Hall Bridge.....	3
Step 3: Near Bridge Entrance.....	4
Step 4: Before Escalators	5
Step 5: Past the Escalators	6
Step 6: Crossing the Last Bridge.....	7
Step 7: Freight Elevator Entrance	8
Step 8: Freight Elevator Exit.....	9
Step 9: Distribution Center Hallway	10
Step 10: The Distribution Center	11
Driving to the Distribution Center	12
Step 1.A: Entering from Lincoln.....	12
Step 1.B: Entering from W. 80 th	13
Step 2: Outside of P2 Entrance	14
Step 3: Inside P2 Parking	15
Step 4: Parking on P2.....	16
Step 5: DC Hallway Entrance	17
Step 6: Distribution Center Hallway.....	18
Step 7: The Distribution Center	19

Summary

Purpose of Document

This document offers step-by-step directions to the Distribution Center for both pedestrians and drivers. Each step is accompanied by a corresponding photo to visually guide you, along with helpful tips to ensure a smooth and efficient arrival.

General Location Information

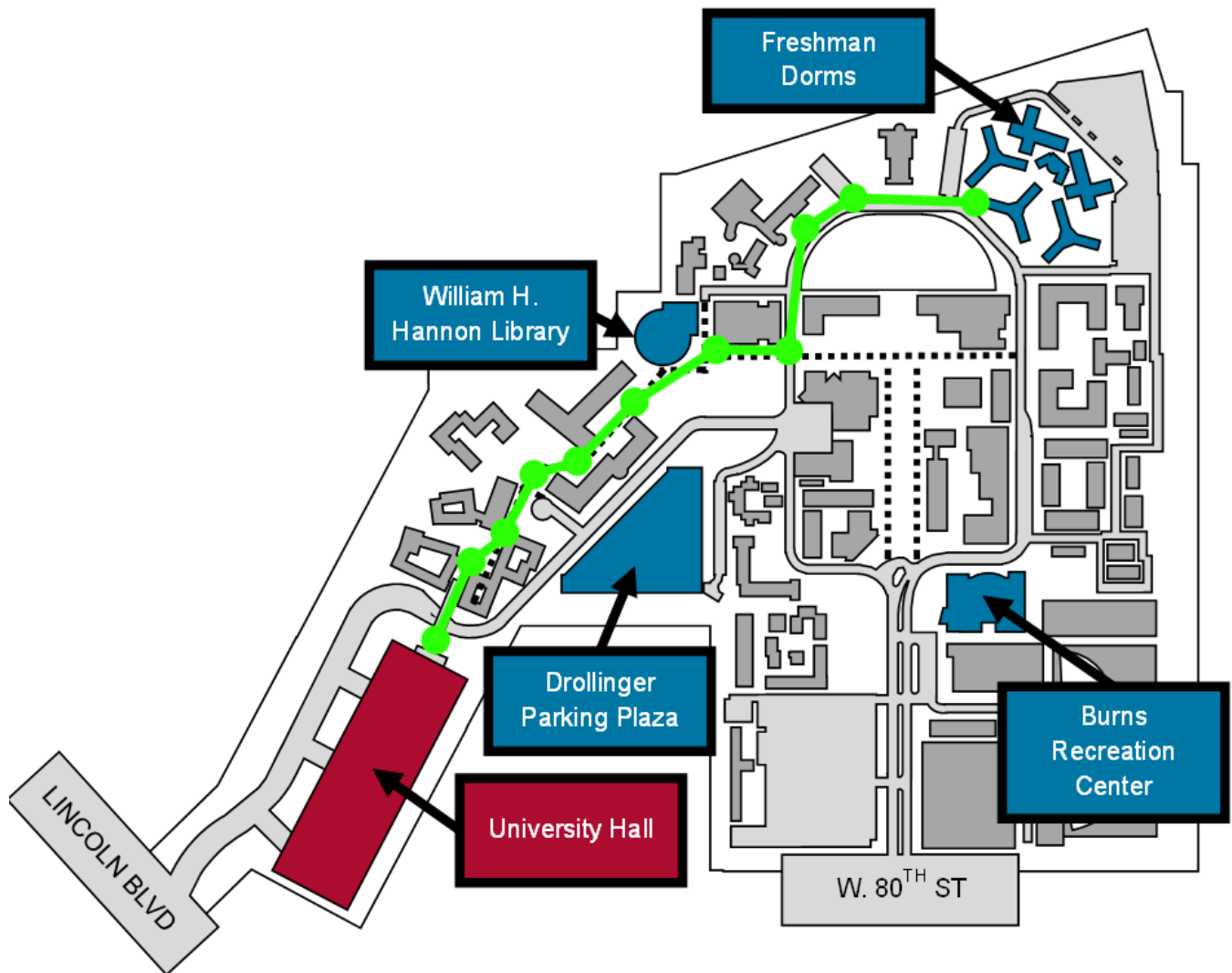
Department	Distribution Center (DC)
Campus	Westchester Campus
Building	University Hall
Floor	P2 (Parking Level 2)
Suite Number	0800
Street Address	1 LMU Drive
City	Los Angeles
State	California
ZIP CODE	90045

Contact Information

Phone Number (Front Desk)	(310)-338-2763
Email	dchd@lmu.edu

Walking to the Distribution Center

Step 1: Relative Position



Directions

1. Navigate to the University Hall Bridge. If coming from the Freshman Dorms, follow the green line above.

Tips

1. The Distribution Center is in University Hall on Parking Level P2.

Step 2: University Hall Bridge



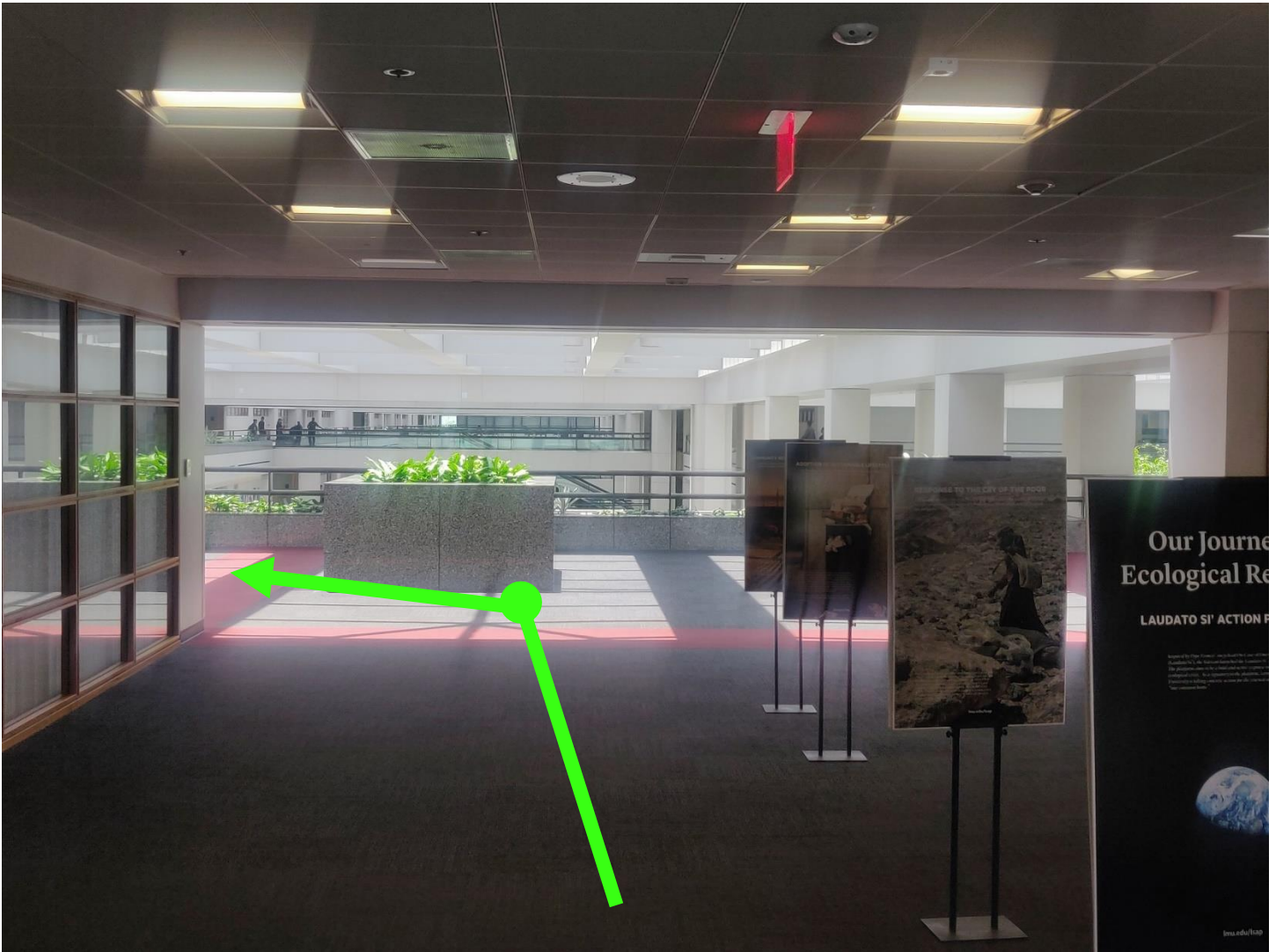
Directions

1. Move along the bridge and enter University Hall at the far end of the bridge

Tips

1. If you walk to the Distribution Center, such as from the dorms or upper campus, go through this entrance.
2. The University Hall Bridge is located at the end of the green line on the above campus map.

Step 3: Near Bridge Entrance



Directions

1. After entering University Hall, navigate towards the planters and turn left down the walkway.

Tips

1. Bathrooms are available to the left, before the planters.
2. Do not turn down the hallway with the bathrooms. This will lead to the Political Science and International Relations department.

Step 4: Before Escalators



Directions

1. Move left along the planters.
2. Head towards the escalators but walk past them all the way down to the last bridge.

Tips

1. Do not go down the escalator.
2. Do not go to the first elevator lobby on the right. These elevators only go down to P1 parking.

Step 5: Past the Escalators



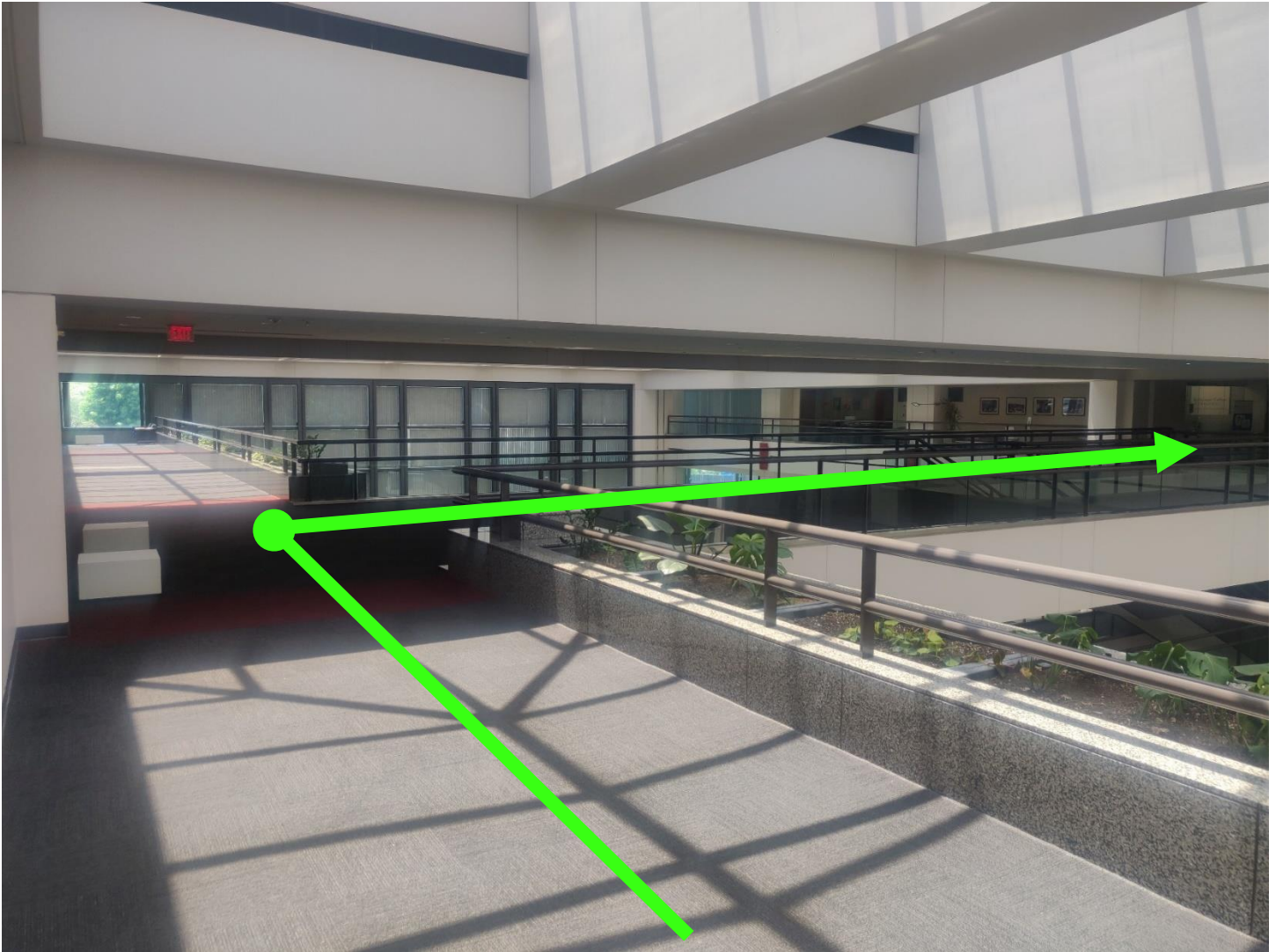
Directions

1. Walk past the escalators.
2. Go straight down the walkway, towards the far end of University Hall

Tips

1. Do not go to the first elevator lobby on the right.

Step 6: Crossing the Last Bridge



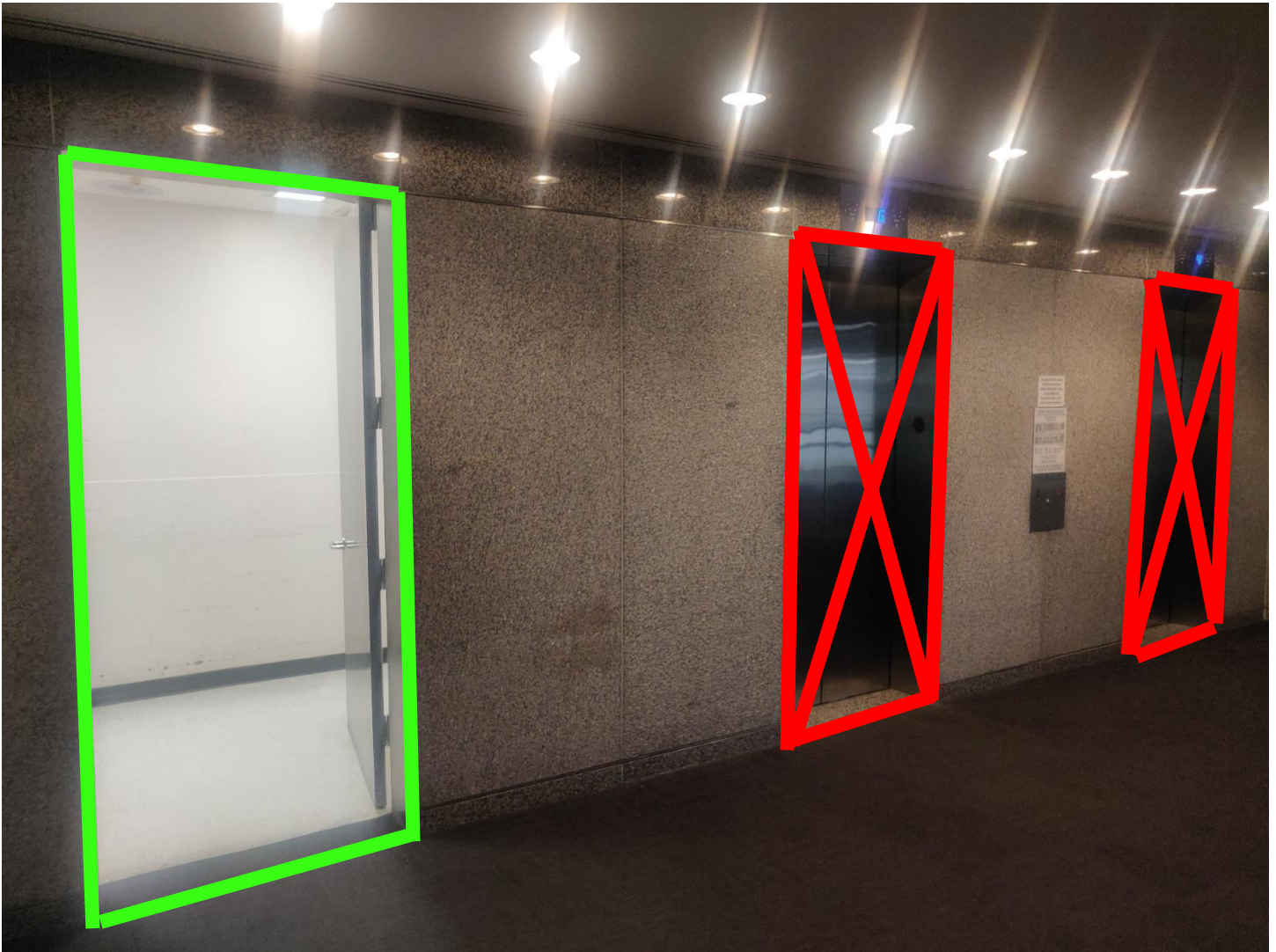
Directions

1. At the last bridge, turn right onto it.
2. Continue straight, past the staircase to the 3rd floor.
3. Enter the elevator lobby through the left entrance.

Tips

1. The elevator lobby is the dark area on the far side of the bridge.

Step 7: Freight Elevator Entrance



Directions

1. Go through the door on the far left. This room contains the entrance to the freight elevator.

Tips

1. Do not go to use the other two elevators. These elevators do not go to Parking Level P2.
2. Please be patient. The freight elevator is the only elevator that goes to every floor. For this reason, it is often the busiest elevator in the building.

Step 8: Freight Elevator Exit



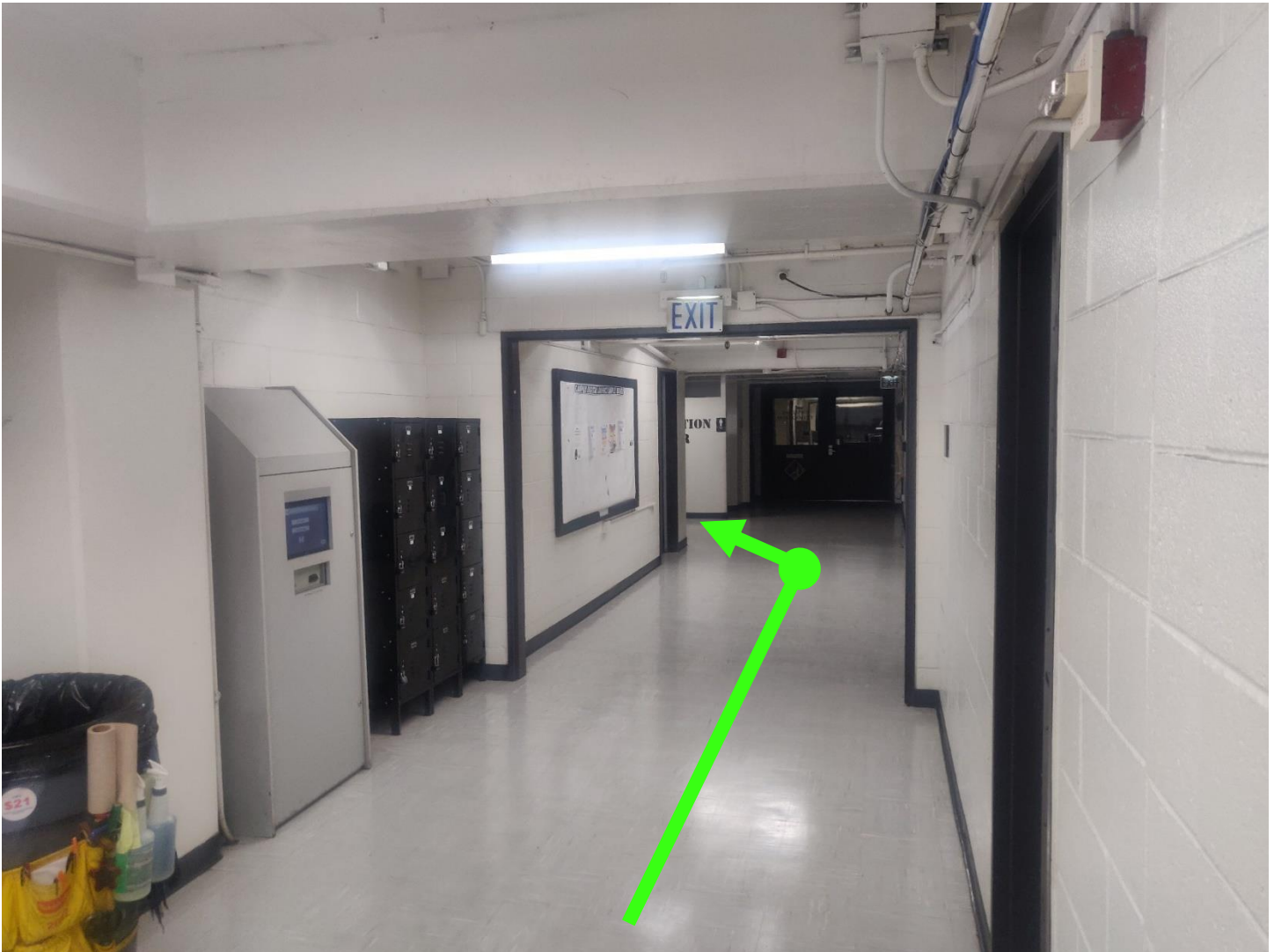
Directions

1. Enter the freight elevator.
2. Select Parking Level P2.
3. On Parking Level P2, exit to the left.

Tips

1. Make sure to exit on Parking Level P2. Parking Level P1 and Parking Level P3 look similar.
2. Exiting to the right will lead to garage parking on Parking Level P2.

Step 9: Distribution Center Hallway



Directions

1. After exiting the freight elevator, turn left down the hallway.
2. At the far end of the hallway, but before the bathrooms, turn left.

Tips

1. There are bathrooms and a water refill station available at the end of this hallway.
2. Pass the bathrooms, there is a beverage vending machine available that takes both card and cash.

Step 10: The Distribution Center



Directions

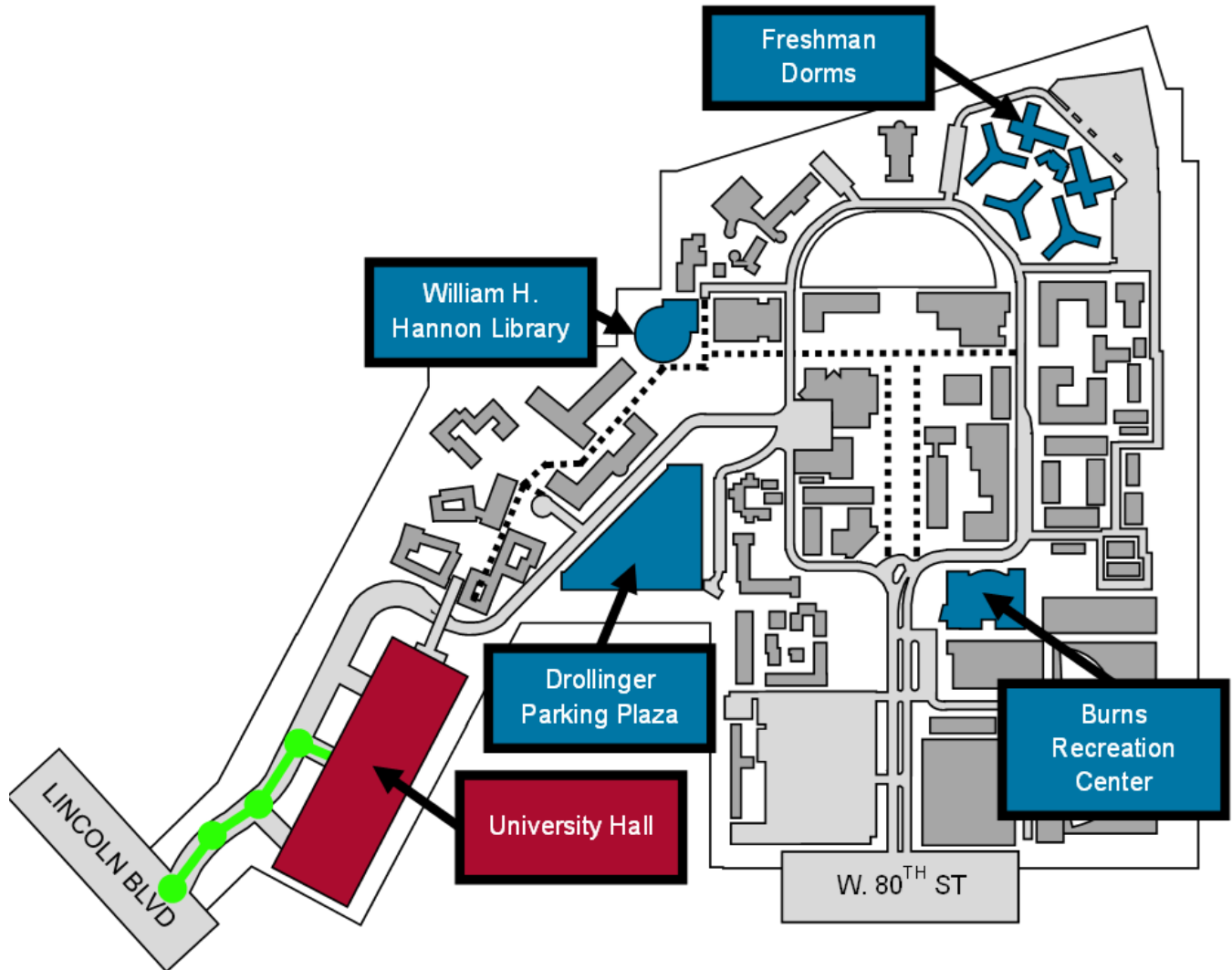
1. Continue down the hallway to the Distribution Center.

Tips

1. If you received a notification that your package is in the lockers, there will be an access code at the bottom of the email. The locker console will be to the left of this hallway. Input the access code into the locker console to collect your package.

Driving to the Distribution Center

Step 1.A: Entering from Lincoln



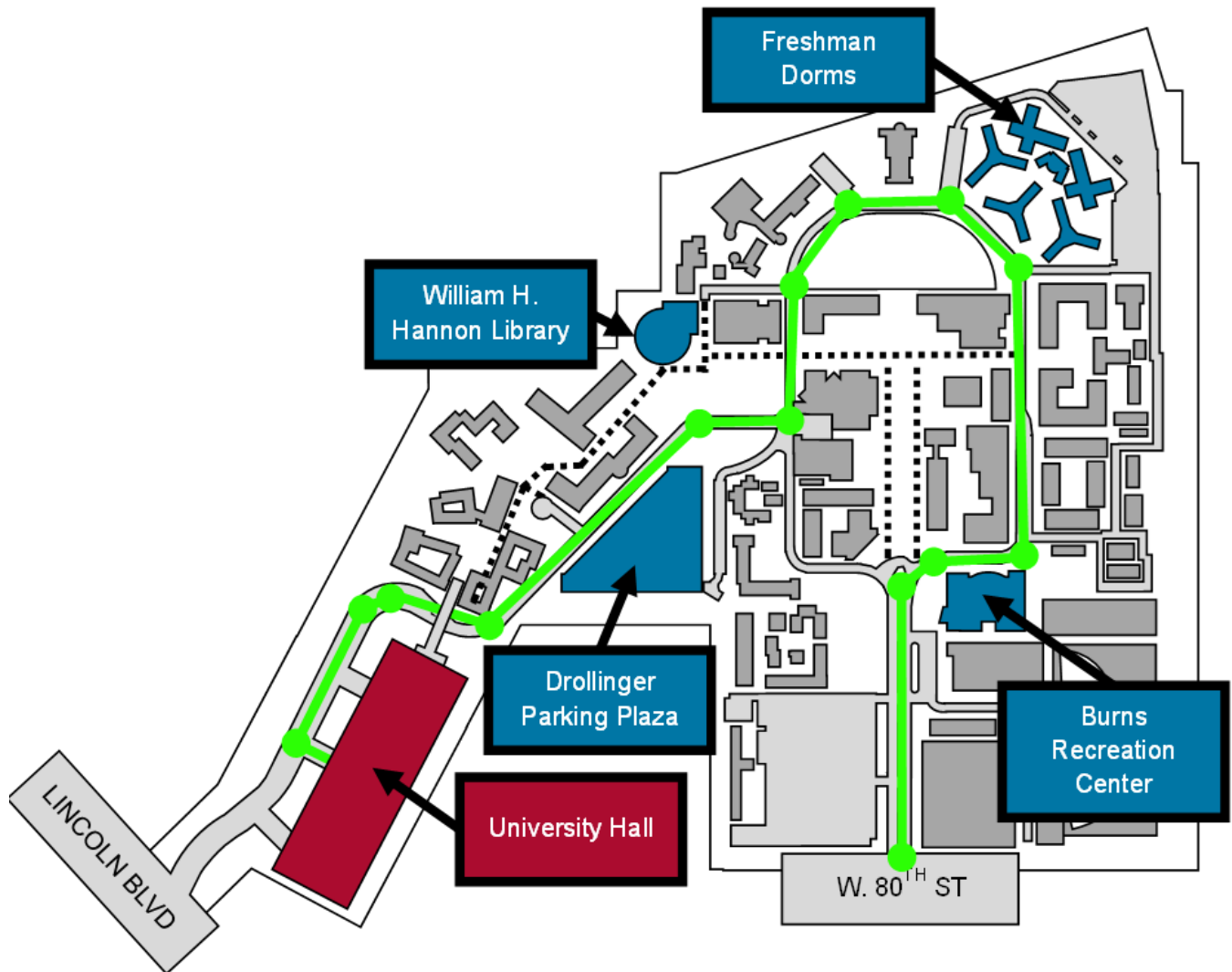
Directions

1. Immediately after passing the security checkpoint, turn right into the first garage entrance.

Tips

1. As the right turn is immediately after the security checkpoint, it would be best to get in the far right lane when entering from Lincoln.

Step 1.B: Entering from W. 80th



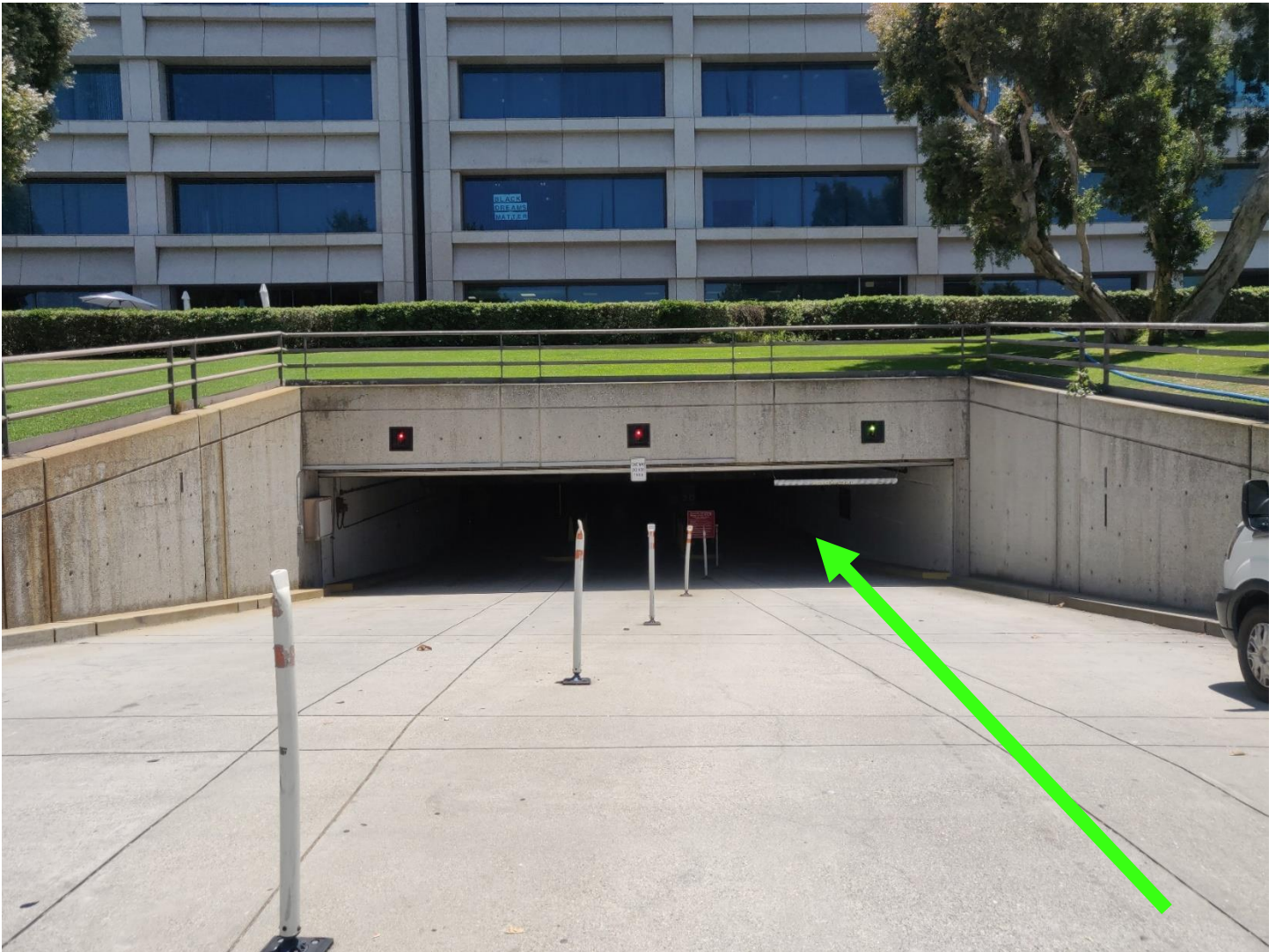
Directions

1. Follow the green line in the map above to University Hall, Parking Level P2 entrance.

Tips

1. Do not go down the one way road at the traffic circle. Drive around campus to get to University Hall, Parking Level P2.
2. Coming from W. 80th, the P2 entrance will be the second garage entrance in University Hall, before the Lincoln security checkpoint.

Step 2: Outside of P2 Entrance



Directions

1. Turn and enter Parking Level P2.

Tips

1. The entrance to Parking Level P2 narrows into a single lane.
2. There is a speed bump at the bottom of the ramp.

Step 3: Inside P2 Parking



University Hall Parking Garage Levels P2 & P3

Faculty, Staff, Affiliate, Student,
and Visitor Parking

Please note the following:

- Paid parking is enforced Monday through Friday, 8 AM to 8 PM
- CVC regulations and timed spaces are enforced 24 hours a day, 7 days a week
- LMU is not responsible for losses, injuries or damages
- Head-in parking is required if the vehicle does not have a front license plate
- All vehicle operators are responsible for complying with the University's Parking Rules and Regulations available online at lmu.edu/parking
- Vehicles in violation of the University's Parking Rules and Regulations may be towed at the owner's expense - LAMC 80.71.4, CVC 22658 and CVC 22511
- Impounded vehicles may be reclaimed at Bruffy's Towing: (310) 395-0084

FOR ASSISTANCE PLEASE CALL OR EMAIL: 310-338-1681 - parking@lmu.edu

Directions

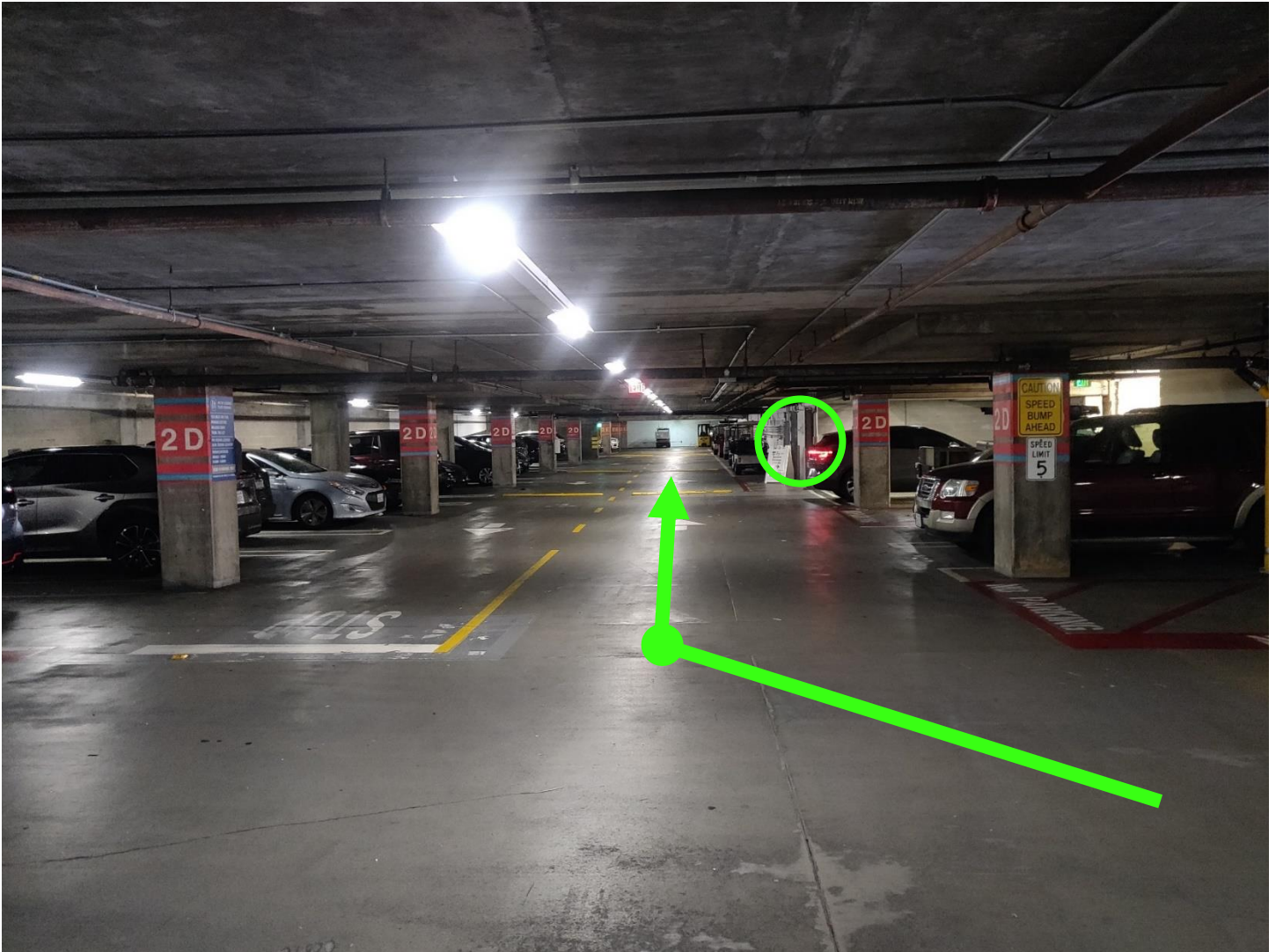
1. After entering Parking Level P2, make the first right.

Tips

1. Parking permits can be purchased at the central elevator lobby.

Driving to the Distribution Center 15

Step 4: Parking on P2



Directions

1. After turning right into Parking Level P2, locate and park in an available parking space.

Tips

1. The Distribution Center is marked by the green circle.
2. There is 30-minute parking available just outside of the Distribution Center.
3. During move-in week, there will be additional 30-minute parking at the far end of the garage.

Step 5: DC Hallway Entrance



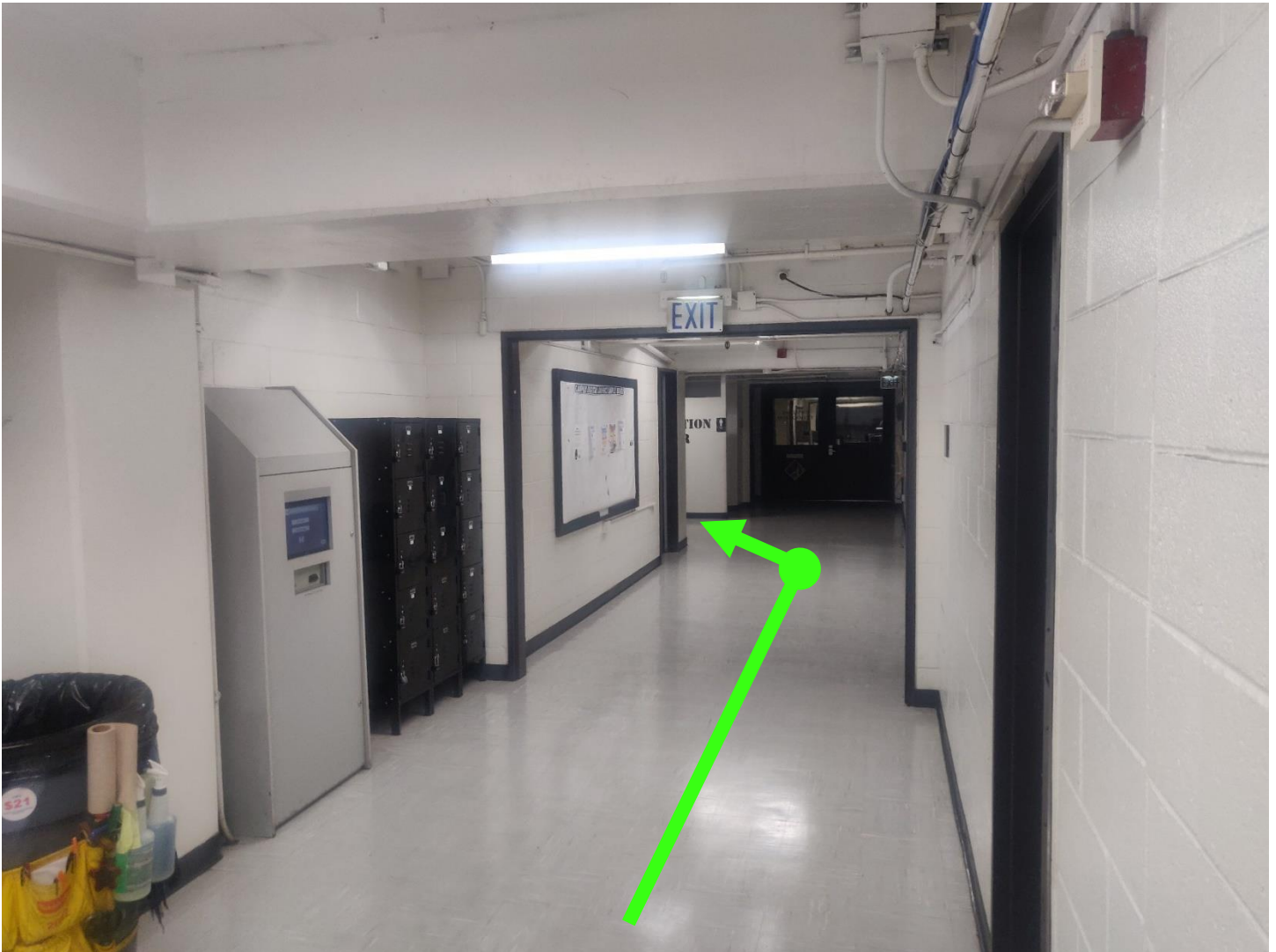
Directions

1. After parking, navigate to the Distribution Center Hallway Entrance.
2. Go down this hallway to the Distribution Center.

Tips

1. The elevator to the left of the entrance is the freight elevator for University Hall. This is the only elevator that has access to every floor in the building.
2. A bathroom, water refill, and a beverage vending machine are available at the end of this hallway.

Step 6: Distribution Center Hallway



Directions

1. After exiting the freight elevator, turn left down the hallway.
2. At the far end of the hallway, but before the bathrooms, turn left.

Tips

1. There are bathrooms and a water refill station available at the end of this hallway.
2. Pass the bathrooms, there is a beverage vending machine available that takes both card and cash.

Step 7: The Distribution Center



Directions

1. Continue down the hallway to the Distribution Center.

Tips

1. If you received a notification that your package is in the lockers, there will be an access code at the bottom of the email. The locker console will be to the left of this hallway. Input the access code into the locker console to collect your package.